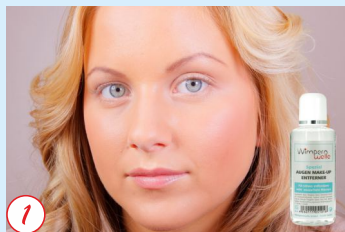


BINACIL™

The Eyelash & Eyebrow Tint



1

Do not mix BINACIL™ Eyelash Tint and Developer with other products!
Contact lenses are to be removed before treatment.



2

First, remove mascara with Eye Make-up Remover.
Thereafter, degrease the eye lashes with physiological Sodium Chloride Solution (Art. No. 10330).



3

Apply a skin protection cream to the smooth side of the Skin Protection Pad (Art. No. 23965).

Apply it with open eyes and ...



4

... carefully slide it underneath the lower lashes until it reaches the edge of the eyelid.

ALTERNATIVE: Or work with our ...

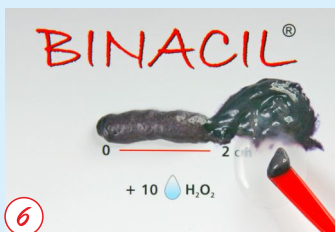


5

Art. No. 23975

... self-sticking Skin Protection Pads!
Then apply a skin protection cream to the upper edge of the eyelid.

From now on close the eyes until the end of the treatment.
Put on suitable gloves for tinting!



6

Mix 10 drops of BINACIL™ Hydrogen Peroxide Creme with 2 cm of the selected BINACIL™ Eyelash Tint on the hygienic Mixing Pad with the special BINACIL™ Mixing Stick.

ATTENTION: Do not use any metallic instruments for mixing!



7

Apply the mixture evenly and generously from the roots to the tips with the Applicator Stick or the fan-shaped Tinting Brush.
Exposure time: 8 - 10 min.

Directly after Wimpernwelle Lash Lifting: **ONLY 2 minutes!**



8

At the end of the application time, remove all BINACIL™ Tint downwards to the Skin Protection Pad by using the scoop side of the Applicator Stick and wipe it on to a facial tissue.



METHOD 1
in vertical
position

Wipe any remaining tint thoroughly several times from the eyelashes by using moistened cotton pads.

Take off the Skin Protection Pad carefully and wipe everything again with a moist cotton pad until all tint rests are removed.



METHOD 2
in horizontal
position

If eyelashes are tinted during a cosmetic treatment in horizontal position remove the Skin Protection Pad immediately after step 8.

Rinse the remaining tint with wet cotton pads. Collect the water in a dish.



At the end, remove any tint rests from the skin or the eyelid by using the special BINACIL™ Colour Cleaner.

NEW
Training video:
www.wimpernwelle.com
→ VIDEOS



Last step:
To provide the eyelashes with a glossy sheen and colour intensity, brush the eyelashes directly after the tinting procedure with the **LAMINATION FLUID professional**.

LAST STEP AFTER THE LASH TINTING:

The professional KERATIN conditioner helps to revitalize the eyelash structure:

LAMINATION FLUID *professional*

will replenish damaged lashes, makes them strong and gives them a lustrous finish!

KERATIN BOOSTER

is a high-end fluid with Keratin, Silk proteins, Wheat proteins and Panthenol.

APPLICATION:

With the microbrush (Art. No. 10321) cover the eyelashes **generously** from above and below. Do not wash off the FLUID during the following hours!



For the strengthening of the eyelashes recommend to your clients the use of our conditioning **Eyelash & Eyebrow BALM** (Art. No. 30373). Panthenol and Castor Oil will nourish the eyelashes over night and make them smooth.

TIP

Or offer the Lash & Brow **LAMINATION FLUID** (Art. No. 30371) to continue the KERATIN cure at home. It will enhance the repair effect and will give the eyelashes a lustrous finish.



INTENSIVE - in 6 deep colours
After Wimpernwelle Lash Lifting **only 2 minutes exposure time!**



! For professional use only. Contains resorcinol & phenylenediamines (toluenediamines). Hydrogen Peroxide Cream contains hydrogen peroxide. This product can cause severe allergic reactions. Read and follow instructions: This product is not intended for use on persons under the age of 16. Temporary "black henna" tattoos may increase the risk of allergy. Eyelashes shall not be coloured if the consumer: has a rash on the face or sensitive, irritated and damaged scalp, has experienced any reaction after colouring hair or eyelashes, has experienced a reaction to a temporary "black henna" tattoo in the past. Rinse eyes immediately if product comes into contact with them. Wear suitable gloves. Avoid contact with eyes. Keep out of reach of children. Do not carry out a tolerance test on client. In case of any doubt please consult a doctor before treatment. In case of any itching, burning, redness or swelling during the treatment stop the treatment, immediately rinse out product and consult a doctor.

Easy and fast Eyelash Tinting with the optimized and efficient components of the BINACIL system!

<p>Never again tint on your hands, no tint rest in the waste water: Mixing Pad (50 sheets)</p>  <p>23967</p>	<p>With our mild Developer Creme, stinging eyes during the eyelash tinting belong to the past (50 ml)</p>  <p>23961D</p>
<p>XL size Skin Protection Pad, gently curved, made of tint-impermeable soft fleece (100 pcs.)</p>  <p>23965</p>	<p>Self-sticking Skin Protection Pads to cover up the skin during the treatment (10 pairs)</p>  <p>23975</p>
<p>Special Fan-Shaped Brush 23970 for application of the eyelash tint</p>  <p>Easy mixing, application, correction with the Mixing Stick 23969</p>	<p>Colour Cleaner: Removes tint from the skin, but not from the eyelashes!</p>  <p>23940 50 ml 23941 200 ml</p>



Wimpernwelle GmbH
 12247 Berlin - Germany
 info@wimpernwelle.com
 www.wimpernwelle.com
 made in Germany