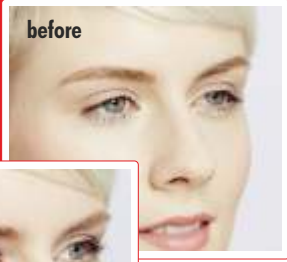


INSTRUCTIONS FOR USE

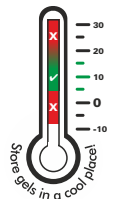


The way to perfect lashes in **3** steps:
Lifting - Tinting - Lamination



1. STEP
Wimpernwelle
Lash Lifting with
POWER PAD

curvy or **extra**



Training video:
www.wimpernwelle.com
→ VIDEOS



made in Germany

1 Before starting the treatment please ask regarding existing allergies against ingredients, e.g. Rubber Latex allergy concerning the Special Glue. Contact lenses are to be removed before treatment.



Then use a make-up pad to carefully remove eye make-up and mascara by using an oil-free make-up remover.

NOTE: In case of water-proof mascara use an oil in water based make-up remover, e.g. **Special Make-up Remover** (art. no. 10361).

3 Afterwards eyelashes and eyelid **must** be degreased by using **Sodium Chloride solution** (art. no. 10330). This is to guarantee, that the Power Pads adhere perfectly to the lid and that the lashes will keep well on the Pads.



(INFORMATION:
Our Sodium Chloride solution will keep longer by preservation)

4 Comb the eyelashes with the **mascara wand** (art. no. 10369) in order to align any criss-crossed lashes prior to the treatment.



3 sizes **extra**: size 1, size 2, size 3
4 sizes **curvy**: size 1, size 2, size 3, size 4

Choose a suitable Power Pad™: The more you want to lift the eyelashes, the smaller you select the Power Pad™.

ATTENTION: Ask your customers how intensively they want their lashes to be lifted. Always pay attention to the anatomy of the eye and lid.

TIP Also longer lashes can be lifted with a smaller Power Pad™ size; the lifting effect will then be accordingly stronger.

6 The flexible, especially developed **POWER PAD™** has an innovative, protected 3D design:

- ➔ The Power Pad™ is easy to apply, because its **back is preformed** and thus corresponds to the natural shape of the eyelid.
- ➔ As the eyelashes are shorter at the corner of the eye, also the front part of the pad is designed **asymmetrically**: Therefore there is always one left and one right Power Pad.
- ➔ The Power Pad™ ends in a **thin lay-on edge**, so that the eyelid margin is clearly visible.
- ➔ For an easy and precise lay-on, the **lower edge** of the Power Pad™ **follows the eyelid margin**.
- ➔ A **horizontal marking line** on the Power Pad™ marks until where the gel must be applied.

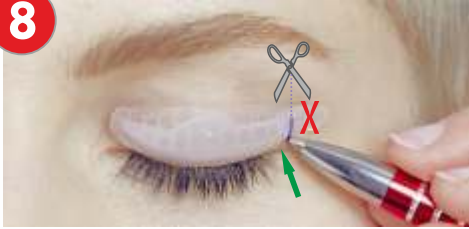
7 IMPORTANT: The small "ear" at the end of the Power Pad™ always points outwards in direction to the ear.

From now on the eyes have to remain closed until the end of the treatment.



WARNINGS - more treatment and material notes: For professional use only. Store product in a cool place. Avoid contact with eyes. In the event of contact with eyes, rinse immediately with plenty of water and seek medical advice. Wear suitable gloves. Keep out of reach of children.

8



First, place the Power Pad™ on the eyelid for a test: If it is pushed up at its outer edge, due to the shape of the eyelid, the pad is too long and should be shortened.

9



In order to keep the upper lid securely stretched during the whole treatment, it needs to be fixed upwards with one or two strips of **medical tape** (art. no. 10340). This makes the pad easier to apply and prevents it from slipping during treatment.

10

PAD BACK SIDE



Apply a small drop of **Power™ Glue** (art. no. 10315) to the **BACK SIDE** of the pad.

Using the **TRIO-TOOL** or a wooden stick, spread it over the entire surface to obtain a **very thin** film.

ATTENTION: The glue is water-based. Therefore, the lower the temperature or the thicker the layer, the slower it dries.



11



Hold the Power Pad™ by its flap and place the lower lay-on edge above the eye lid margin.

IMPORTANT: The eyelid margin must still be clearly visible (green pointer).

12



Press the Power Pad™ onto the eyelid. If a pad was misplaced it may be taken off carefully and can be placed again.

Now repeat steps 10-12 with the second Power Pad™.

13



Check the position of the fixed Power Pads: The eyelid margin must be clearly visible. Both Power Pads should be fixed in an identical position.

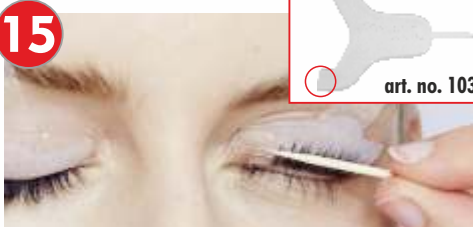
Now start attaching the lashes to the first pad.

14



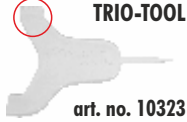
With the **Power Pad™ Glue** draw a line, in the width of the wooden stick or the pointed tip of the **TRIO TOOL**, across the pad.
Then spread this glue evenly all the way down until the lower rim of the pad.

15



By using the wooden stick, the Applicator or the flat end of the **TRIO-TOOL**, slowly and evenly spread only 3-4 lashes at a time straight from their roots upwards into the glue. Stop in the middle of the lashes and hold for a moment. If the lashes do not adhere instantly, try again once or twice. If any lashes still do not adhere, fix them finally at step 18.

16



Use the small comb of the **TRIO-TOOL** to pull the lashes straightly upwards.
ATTENTION: If any lashes are criss-crossed, they must be separated (use the wooden stick or the pointed tip of the **TRIO TOOL**).
Thanks to the flexible glue, the lashes may be shifted on the pad without any problem.

17



IMPORTANT: Pull the lower lid downwards to make sure no lower lashes adhere to the Power Pad™!
Should any upper eyelashes not adhere on the pad, apply a small amount of the **Special Glue** (art. no. 10312) onto a new wooden stick or the **TRIO-TOOL**.

18



Coat the non-adherent lash tips with the **Special Glue** and press it for 5 seconds onto the Power Pad™.
IMPORTANT: Once eyelashes are attached with **Special Glue** they can no longer be re-aligned!
Now repeat steps 14 to 18 on the second Power Pad™.

19



For each side, take a **self-adhesive Skin Protection Pad** (art. no. 23975) or alternatively a **non-adhesive Skin Protection Pad** (art. no. 23965), coated with adhesive creme on its blank side. Place it on top of the lower lashes, very close to the eyelid margin.

20



Stroke (do not dab!) GEL 1 **evenly** and **generously** with the modelling brush. Begin **approx. 1 mm** above the eyelash roots and stroke the GEL **until the horizontal marking line**. Only the area below the marking line presents the form giving part.

23



With the eyes still closed apply GEL 2 just like GEL 1. Exposure time: **8 min!**



NEW ALTERNATIVE
Turn 2 into 1:
Fixing & Tinting
in 1 step
with the
BINACIL
LIFTING BOX

TIP

21



GEL 1
12 min!



Exposure time of GEL 1 is 12 minutes.

IMPORTANT: In case of very firm or stubborn lashes the exposure time must be extended to 15-18 minutes. Then take the GEL 1 away with a dry make-up pad.

24

Then first take off GEL 2 with a dry make-up pad and remove the self-adhesive skin protection pad.



Moisten a make-up pad with the specially created **Glue & Roll Remover** (art. no. 10336).

22



Check now if during treatment any lashes have detached from the Power Pad™. You must first re-glue them with the **Special Glue**.

IMPORTANT: Make sure that no lashes have shifted on the Power Pad™ while taking away the Gel.

25



By rubbing lightly, remove the lashes from the Power Pad™ and the pad from the eyelid.

Also any rests of glue on skin and eyelashes are removed easily with the **Glue & Roll Remover**.

26



Completely moisten the medical tape with the **Glue & Roll Remover**. Stretch the lid, then slowly and carefully strip away the tape downwards. Finally cleanse the eyelid and eyelashes thoroughly with water.

27

2. STEP: Have you already tinted and fixed at the same time in step 23 with the BINACIL LIFTING BOX? Then you are already done and only still need to laminate the lashes.

If not, then tint the lashes now: To every customer, the lifting effect will become clearly visible!



ATTENTION: Exposure time of **BINACIL™** directly after a Lash Lifting treatment is **only 2 min!**

28

3. STEP: The professional KERATIN conditioner helps to revitalize the eyelash structure:

LAMINATION FLUID *professional*

will replenish damaged lashes, makes them strong and gives them a lustrous finish!

KERATIN BOOSTER

is a high-end fluid with Keratin, Silk proteins, Wheat proteins and Panthenol.

APPLICATION: With the microbrush (art. no. 10321) cover the eyelashes **generously** from above and below. Do not wash off the FLUID during the following hours!



TIP

For the strengthening of the eyelashes recommend to your clients the use of our conditioning **Eyelash & Eyebrow BALM** (art. no. 30373). Panthenol and Castor Oil will nourish the eyelashes over night and make them smooth.



Or offer the Lash & Brow **LAMINATION FLUID** (art. no. 30371) to continue the KERATIN cure at home. It will enhance the repair effect and will give the eyelashes a lustrous finish.



TRAINING VIDEOS ONLINE

Please register here to receive your password:

www.wimpernwelle.com ► VIDEOS

Wimpernwelle GmbH - 12247 Berlin - Germany

Tel 0049 30 76703430 - Fax 0049 30 8825914

www.wimpernwelle.com - info@wimpernwelle.com

facebook.com/wimpernwelle



made in Germany

The flyer is printed

